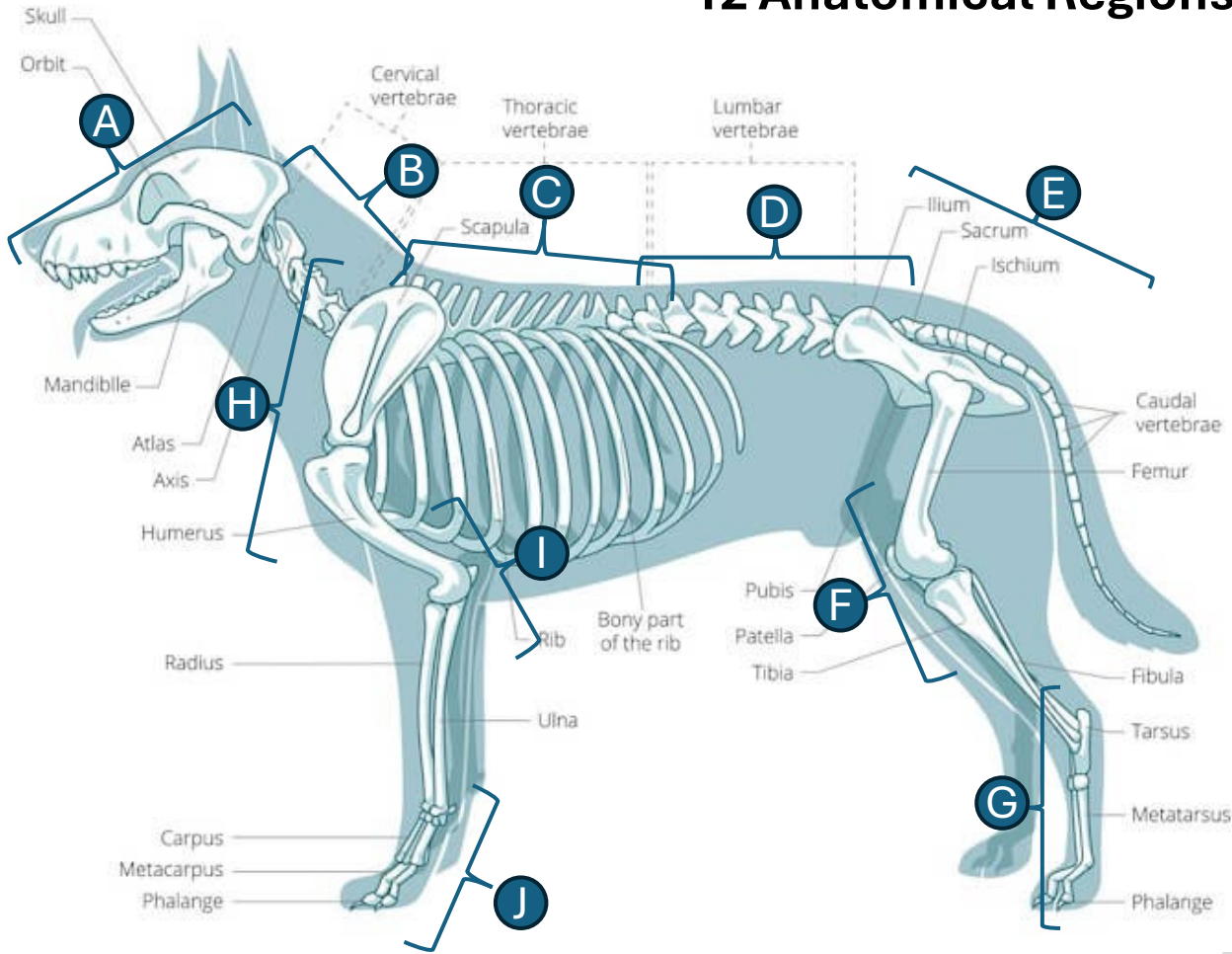
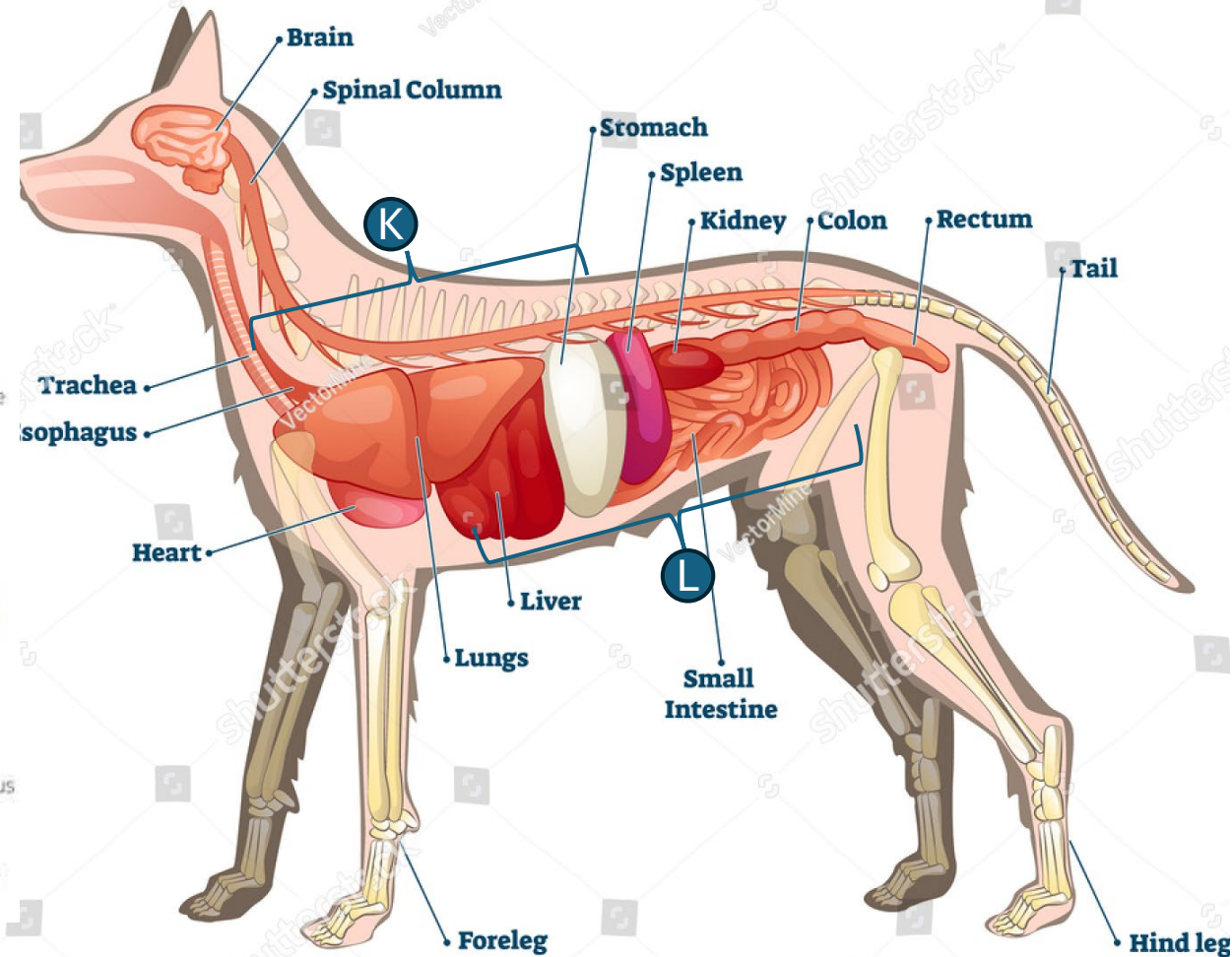


# 12 Anatomical Regions for CT Radiology



- A – **Head**: From tip of nose to mid C3
- B – **Cervical**: From back of ears to T3
- C – **Thoracic**: From T1 to L3
- D – **Lumbar**: From L2 to S3
- E – **Sacral**: From L6 to Anus
- F – **Stifle**: From Midpoint of Femur to Midpoint of Tibia / Fibula
- G – **Tarsus**: From Mid Tib / Fib to end of Phalanges



- H – **Shoulder**: From Scapula to mid Humerus
- I – **Elbows**: From Center of Elbow; 60 mm in both directions
- J – **Carpus**: From Mid Radius/Ulna to tip of Phalanges
- K – **Thorax**: From Thoracic Inlet / top of heart to end of lung lobes / diaphragm
  - Heart and Lungs
- L – **Abdomen**: From Middle of Heart to end of Bladder
  - Liver, Spleen, Stomach, Kidney, Pancreas, Intestines, Bladder